

LOADING-/ UNLOADING CONVEYOR

TECHNOLOGY FOR A SUSTAINABLE TOMORROW



Storing



APPLICATION

Loading-/unloading conveyor are used in silos and storage bunkers containing solids in the size of wood chips. What makes these machines special is that they fill silos as well as empty them. Conventional systems are generally applicable for only one function. The loading-/unloading conveyor consists of a distribution-/discharge conveyor that can be moved up and down on steel wire ropes through rope guides by means of lifting device. This provides the constant filling and emptying.

The required steps are fully automatically initiated and processed by PLC (programmable logic control) through various programs. It is also possible to fill and empty a box simultaneously.

The standard version of a loading-/unloading conveyor works in a storage box. If several boxes are arranged side by side, it is also possible to move the loading-/unloading conveyor on a chasis to the other boxes and to fill and empty them as well.

Vecoplan[®]

LOADING-/ UNLOADING CONVEYOR

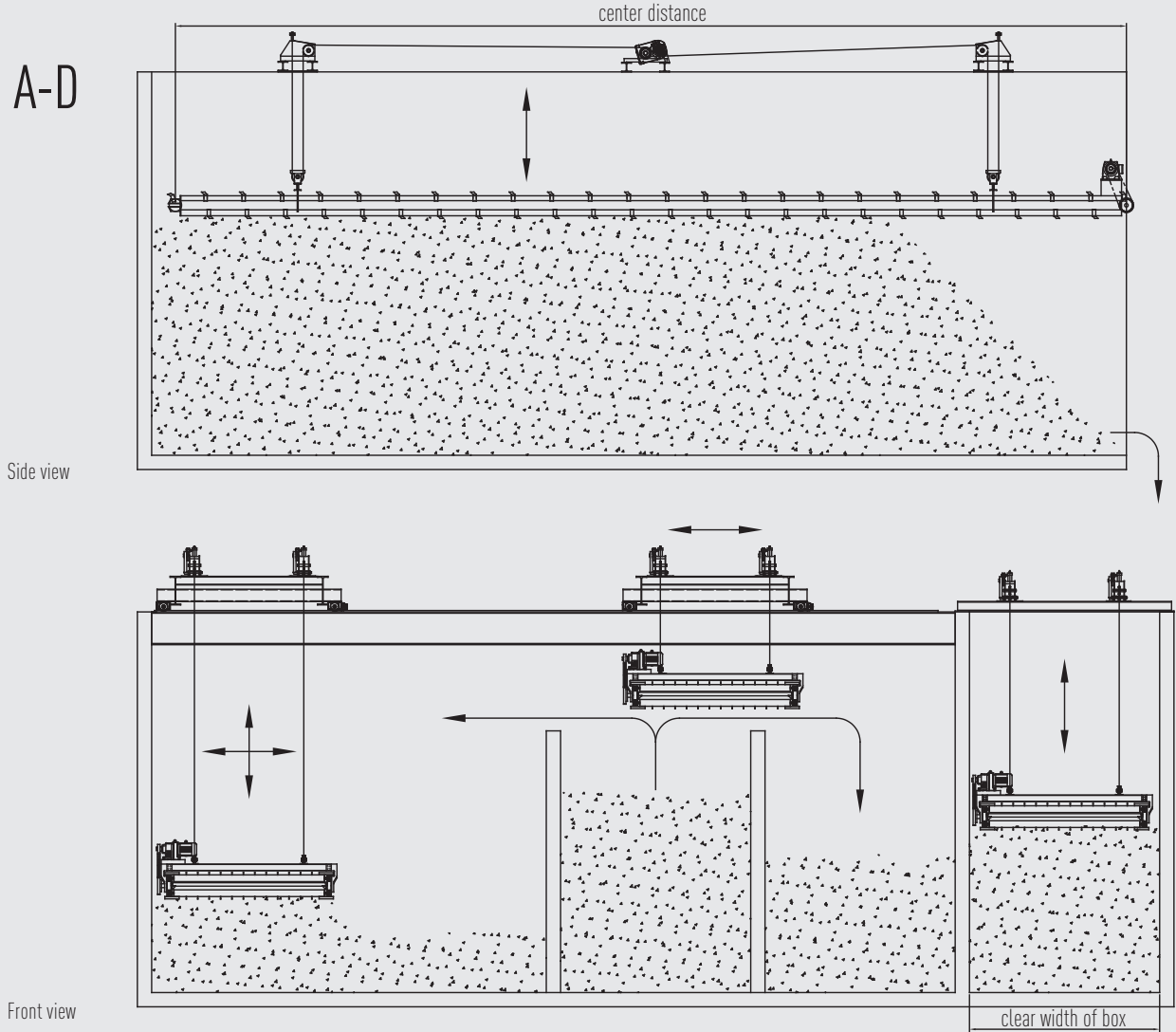
TECHNOLOGY FOR A SUSTAINABLE TOMORROW



Storing

Example

TYPE A-D



Side view

Front view

DETAILS

		Type A	Type B	Type C	Type D
Conveying width	mm	1800 / 2100	3100 / 3300 / 3600	4100 / 4500	4500
Clear width of box	mm	2300 / 2600	3600 / 3800 / 4100	4600 / 5000	5000
Max. center distance	mm	30000	30000	30000	30000
Breaking load conveyor chain	t	11,2	11,2	11,2	16
Max. discharge capacity*	m ³ /h	200	300	400	500

Subject to technical changes without notice / Dated 09/2010

* at conveying speed of 30 m/min